


产品规格承认书 SPECIFICATION

文件编号 File No.: UME-EG-SP23081701/A1

客户 Customer	AKON	核准 Approval	
品名 Product	开关电源 Switching power supply	品管确认 QC	林文怡
型号 Model	AD-AKA120P700	审核 Check	
日期 Date	2023-08-17	拟制 Execution	BMD

客户承认意见 Confirmation by Customer	客户签署 Stamp & Signature
<input type="checkbox"/> 合格 Accept <input type="checkbox"/> 不合格 Reject <input type="checkbox"/> 条件合格 Conditional Acceptance	

确认签署后, 请回传一份。有任何问题, 请尽快告知我们。

Please return one copy to us with your signature and feel free to contact us for any questions.



厦门友盟电子有限公司

XIAMEN UME ELECTRONICS CO., LTD.

电话 Tel: 0592-2611448

地址: 厦门市翔安区莲亭路火炬八方工业园10号楼882-7号8楼

Add: 8th Floor, No. 882-7, Lianting Road, Xiamen Torch Hi-Tech Zone (Xiangan) Industrial Zone



产品规格承认书 SPECIFICATION

文件编号 File No.: UME-EG-SP23081701/A1

客户 Customer	AKON	核准 Approval	ZL
品名 Product	开关电源 Switching power supply	品管确认 QC	LTF
型号 Model	AD-AKA120P700	审核 Check	ZL
日期 Date	2023-08-17	拟制 Execution	BMD

客户承认意见 Confirmation by Customer	客户签署 Stamp & Signature
<input type="checkbox"/> 合格 Accept	
<input type="checkbox"/> 不合格 Reject	
<input type="checkbox"/> 条件合格 Conditional Acceptance	

确认签署后，请回传一份。有任何问题，请尽快告知我们。

Please return one copy to us with your signature and feel free to contact us for any questions.

厦门友盟电子有限公司

XIAMEN UME ELECTRONICS CO., LTD.

电话 Tel:0592-2611448

地址：厦门市翔安区莲亭路火炬八方工业园10号楼882-7号8楼

Add: 8th Floor, No. 882-7, Lianting Road, Xiamen Torch Hi-Tech Zone (Xiangan) Industrial Zone

产品规格承认书 SPECIFICATION				文件编号 File No.	UME-EG-SP23081701/A1
品名 Product	开关电源 SPS	型号 Model	AD-AKA120P700	日期 Date	2023-08-17

目录 INDEX

1	变更履历 Revision History.....	1-3
2	概述 Summary	2-4
3	技术要求 Technical requirements.....	3-4
	3.1 安全标准 Safety Standards.....	3-4
	3.2 Input	3-4
	3.3 Output.....	3-4
	3.4 保护要求/ PROTECTIONREQUIREMENTS.....	3-5
	3.5 可靠性及质量控制 Reliability and Quality Control.....	3-5
	3.6 测试线路图 Test Circuit	3-10
4	线路图 Schematic Diagram	4-10
5	电路板图 P.C.B.....	5-11
6	CORD 图 (单位 unit: mm 颜色 color: Black)	6-12
7	AC CORD 图	7-13
8	外观示意图 Cord and Mechanical Drawing (单位 unit: mm 颜色 color: Black)	8-14
9	铭板标识 nameplate.....	9-15
10	包装方式 Packaging	10-15
11	材料清单 BOM.....	11-16

*** The products limited warranty period is 18 months.
(From date code of product.)**

● The products meet RoHS requirements.

批准 Approval:	ZL	审核 Check:	ZL	制表 Execution:	BMD
-----------------	----	-----------	----	---------------	-----

产品规格承认书 SPECIFICATION				文件编号 File No.	UME-EG-SP23081701/A1
品名 Product	开关电源 SPS	型号 Model	AD-AKA120P700	日期 Date	2023-08-17

1 变更履历 Revision History

版本 REV	变更日期 Date	变更内容 Content of Change	制表 Execution	审核 Check	批准 Approval
V1.0	2023-08-17	1.First Issue	BMD	ZL	ZL

批准 Approval:	ZL	审核 Check:	ZL	制表 Execution:	BMD
-----------------	----	-----------	----	---------------	-----

产品规格承认书				文件编号	UME-EG-SP23081701/A1
SPECIFICATION				File No.	
品名 Product	开关电源 SPS	型号 Model	AD-AKA120P700	日期 Date	2023-08-17

2 概述 Summary

2.1 本文件包含一般的客户要求及电气、机构和安全性能等方面的描述。

This document contains general customer requirements and those of specific electrical, mechanical and safety for this product.

3 技术要求 Technical requirements

3.1 安全标准 Safety Standards

Japan: 電安法別表第八【JET6108-61010-1009】

3.2 Input

Rated Input Voltage	100-240Vac
Operating Range	90-264Vac
Rated Input Frequency	50~60Hz
Rated Input Current	1.1A
Maximum Input Power	100W
Input Power (No Load)	0.21W Max
Primary Current Protection	Current fuse
AC Blade	PSE type AC Blade
AC Cable	<PS>E 2*0.75mm ² VCTFK L = 1800mm, Black, Lead-free soldering

3.3 Output

Rated output voltage	12V±5%
Rated Load Current	7000mA
Over Current Protection	7.0A Min @Vin=100Vac/240Vac
Line Regulation	The line regulation is less than ±2% while measuring at rated load and +/-5% of input voltage changing.
Ripple	≅ 200mVp-p
Switching Efficiency	88% minimum@ input 115AC/230VAC to meet DOE6
DC Plug	Φ2.1*5.5*9.5(EIAJ)
DC Cord	16AWG UL2464 L = 1000mm, Black, Lead-free soldering

批准 Approval:	ZL	审核 Check:	ZL	制表 Execution:	BMD
-----------------	----	-----------	----	---------------	-----

产品规格承认书 SPECIFICATION				文件编号 File No.	UME-EG-SP23081701/A1
品名 Product	开关电源 SPS	型号 Model	AD-AKA120P700	日期 Date	2023-08-17

3.4 保护要求/ PROTECTION REQUIREMENTS:

过电流保护/Over Current Protection	<p>过流点限制/Over Current Point Limited: 7.7A-9.6A@ Vin= (100-240Vac)</p> <p>当过电流施加到输出端时，输出将打嗝，当故障条件消除时，输出应自恢复。</p> <p>The output shall hiccup when the over current applied to the output rail, and shall be self-recovery when the fault condition is removed.</p>
短路保护/Short Circuit Protection	<p>输出端短路时输入功率减小，电源不损坏，故障条件消除时自恢复。</p> <p>The input power shall decrease when the output rail short, the power supply shall no damage, and shall be self-recovery when the fault condition is removed.</p>
过压保护/Over Voltage Protection	<p>当输出电压高于18V时，电源应自保护。电源不得因此损坏。</p> <p>The power supply shall be self-protect when the output voltage is over 18V. So the power supply shall not be damaged.</p>
过热保护/Overtemperature protection	<p>当芯片温度上升到150±10℃时，电源应自保护，当温度下降到125±10℃时，电源应自恢复。</p> <p>When the chip temperature rises to 150±10℃, the power supply should protect itself, and when the temperature drops to 125±10℃, the power supply should self-recover.</p>

批准 Approval:	ZL	审核 Check:	ZL	制表 Execution:	BMD
-----------------	----	-----------	----	---------------	-----

产品规格承认书 SPECIFICATION				文件编号 File No.	UME-EG-SP23081701/A1
品名 Product	开关电源 SPS	型号 Model	AD-AKA120P700	日期 Date	2023-08-17

3.5 可靠性及质量控制 Reliability and Quality Control

【Electrical Test Items】

Item	Conditions	Criteria
1	Leakage Current Measure the leakage current between Primary and Secondary when adding rated input. AC input = Rating voltage (100/240V)	Less than 250 μ A
2	ESD Test 1. Test is conducted at room temperature/humidity.(25°C, RH 50-60%) 2. Test set is 150pF/150 Ω . 3. (1) \pm 4KV: Contact discharge test. +phase: 3times, -phase: 3times, total: 6times. (2) \pm 8KV: Air discharge test. +phase: 3times, -phase: 3times, total: 6times. (Note) After each ESD test, it should be discharged.	No malfunction (must be in spec after test).
	ESD Test (Ability test) 1. Test is conducted at room temperature/humidity.(25°C, RH 50-60%) 2. Test condition: 150pF/150 Ω . 3. Contact discharge / Air discharge 4. Load: 1)no load 2)rated load 5. Impressing 10 times continuously to plus and minus each. 6. Discharging once after impressing 10 times (To confirm the capacity of unit up to the unit destroyed)	No destruction It confirms at which voltage value the adapter breaks.(Note: Not part of qualification)
3	Hi-pot test Condition=AC3000V, 1min. Test place=Between AC blade and DC plug Sensitivity current=10mA	No malfunction. (damage, arc, breakdown etc)
4	Insulation resistance DC500V, 1min. Between AC blade and DC plug	More than 100M Ω
5	Temperature Rise Test 1. Apply rating input voltage(100/240V), 2. Load: Load meter with load 3. Measure the surface temperature of the adaptor 4. T ambient = The room temperature 5. Condition: Until it carries out temperature saturation (the definition of temperature than 1°C in 1 hour).	Housing surface Temperature rise is less than 65K.

批准 Approval:	ZL	审核 Check:	ZL	制表 Execution:	BMD
-----------------	----	-----------	----	---------------	-----

产品规格承认书 SPECIFICATION				文件编号 File No.	UME-EG-SP23081701/A1
品名 Product	开关电源 SPS	型号 Model	AD-AKA120P700	日期 Date	2023-08-17

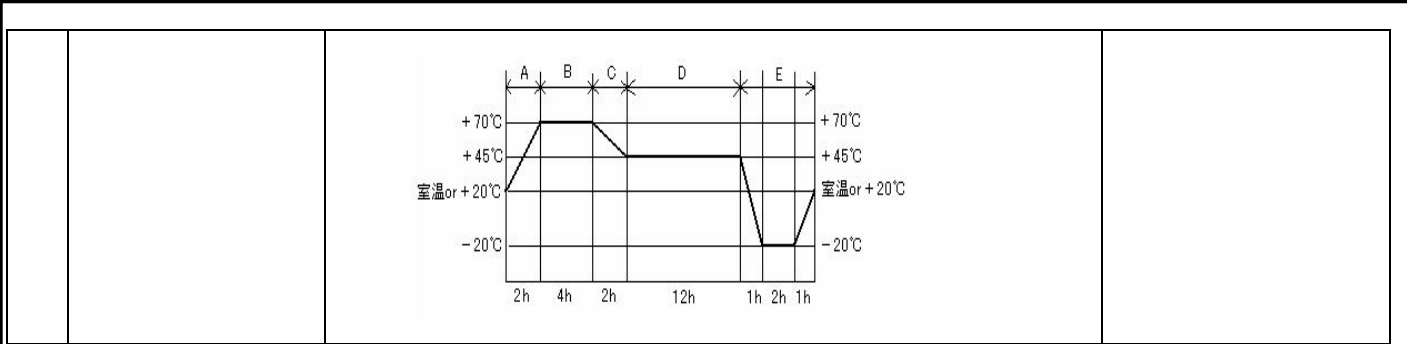
		1.Apply rating input voltage(100/240V), 2.No Load 3.Measure the surface temperature of the adaptor	Housing surface Temperature rise is less than 15K.
6	Input over / under	Apply voltage=(rating input voltage)x(1±30%) Impressed time : 24h	No destruction
7	EMI/Conducted Emission	Telephone stand by mode with rapid-charge condition	Conform to: FCC 47CFR Part 15 Class B J55014-1
8	Surge	IEC61000-4-5 1.2×50μs 1.0KV Positive and negative all three times, Current limiting impedance 100 Ω, Time interval 30 seconds min.	No destruction.

【Environmental Test Items】

Item	Conditions	Criteria
1	Temperature range Electrical performance guarantees temperature range: 0°C to 40°C、 Electrical performance not guarantees working temperature range: -20°C to 50°C Storage temperature range: -30°C to 80°C	No abnormal appearance, mechanic performance or electric performance
2	High Temperature Leave 1. Temperature 80°C for 96 hours. 2. After that test, test set is left in normal temperature, humidity condition for more than 1hour, then evaluate.	No abnormal appearance, mechanic performance or electric performance
3	Low Temperature Leave 1. Temperature -30°C for 96 hours. 2. After that test, test set is left in normal temperature, humidity condition more than 1(hour), then evaluate.	
4	High Temperature Humidity 1. Temperature 50°C, air moisture 90-95% RH for 96 hours. 2. After that test, test set is left in normal temperature, humidity condition more than 30min, then evaluate.	
5	Temperature Humidity test 1. Temperature 40°C, air moisture 90-95% RH for 96 hours. 2. After that test, test set is left in normal temperature, humidity condition more than 30min, then evaluate.	
6	Heat Shock Test 1. Condition: -30°C/ 1 hour to +80°C/ 1 hour, 60 cycles 2. After that test, test set is left in normal temperature, humidity condition more than 1 hour, then evaluate.	
7	Heat/humidity Cycle Test A, C, D : RH=90 ± 10% B : RH= 90 ± 5% E : No limit After 5cycles, put EUT at room temperature/humidity condition	

批准 Approval:	ZL	审核 Check:	ZL	制表 Execution:	BMD
-----------------	----	-----------	----	---------------	-----

产品规格承认书 SPECIFICATION				文件编号 File No.	UME-EG-SP23081701/A1
品名 Product	开关电源 SPS	型号 Model	AD-AKA120P700	日期 Date	2023-08-17



【Mechanical Test Items】

Item	Conditions	Criteria
1	Drop Test Height of drop: 1m, 1times/each surface (total 6 times), Floor: Hardwood.	No parts remove, no abnormal mechanic performance, (outside scratches are acceptable)
2	Package Drop Test 1. Packaged condition. 2. Drop test points (1) 1 corner (2) 2 edges (3) 4 surfaces, Total: 7times drop test. 3. Height of drop:50cm. Bottom surface drop test only apply 65cm.	
3	Unit Vibration Test 1. Vibration condition:33.3Hz/min. 20.6m/s ² 2. (1)Top/Bottom direction:4-hours (2)Right/Left direction:2-hours (3) Front/Back direction:2-hours	
4	Package Vibration 1.Vibration condition: 5-55-5Hz/2min. (1)Top/Bottom direction : 12.5(m/S ²)30(min) (2) Right/left direction : 7.5(m/S ²)15(min)*2	
5	AC Plug in/out Test (AC Blade part) 1. AC Plug in/out test more than 5000times 2.10(times/min). 1 time is in/out action.	
6	Exfoliate with cellophane tape and examine it Use Nichiban 18mm or 24mm width	A character do not disappear. Don't take the label off the main body
7	The reliability to face each other to come off the label ① -40℃ ② 80℃ ③ 50℃ 90% Each 96 hours ④ ③ After, it is a thermal shock examination of 96 cycles	
8	No tally part step Difference of the pitch by height differences of the tally part between casts	less than 0.25mm after an environmental examination

批准 Approval:	ZL	审核 Check:	ZL	制表 Execution:	BMD
-----------------	----	-----------	----	---------------	-----

产品规格承认书 SPECIFICATION				文件编号 File No.	UME-EG-SP23081701/A1
品名 Product	开关电源 SPS	型号 Model	AD-AKA120P700	日期 Date	2023-08-17

【DC cord Test Items】

Item	Conditions	Criteria
1 DC Cord strength (adaptor side / plug side)	1. Test part : Between adaptor and DC cord 2. Pull a cord with 49N(5Kgf) force 3. Time: 1min.	No abnormality such as wire cut, bushing come off
2 DC Cord Bending Test (adaptor side / plug side)	Weight = 4.9N(500g) Angle = +/-90° Cycles in every minute = 40times/min. Test cycles = 1000times Note: contrarotate 90°, and then rotate it clockwise with 180°(+90°~-90°) , and at last return to origin. (1 Cycle : 0°⇒-90°⇒0°⇒+90°⇒0°)	Operate properly.
3 PLUG PULLING TEST1:	Apply a 29.4N (3kgf) static load on the strain relief of the plug device at 5-direction (Upper, lower, right, left, and push) for each 1 minute, The solder must not peel off from PCB, mechanical and electric characteristic shall be normal.	No abnormality such as cord cut, bushing comes off.

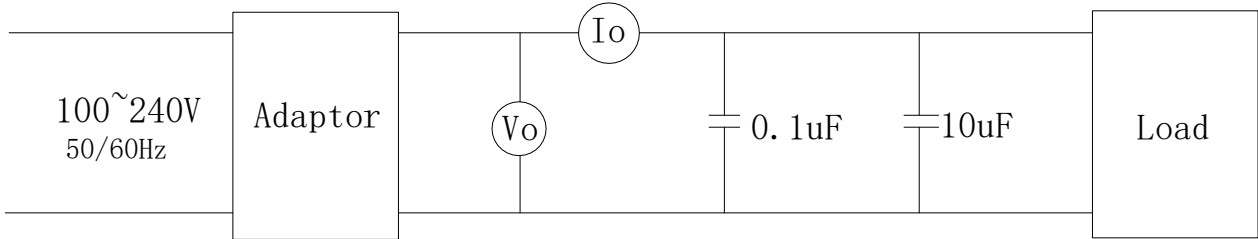
【Safety Test Items】

1 MTBF	Make a measurement condition, a calculation standard clear	More than 50,000 hours
2 Part materials	It is maintenance or the incombustibility of contact / part materials approaching it in an outer fence, the charge department of the electric part	same as UL94V-0; more than it
3 print board	Incombustibility	same as UL94V-0; more than it
4 No tally part step	Difference of the pitch by height differences of the tally part between casts	less than 0.25mm after an environmental examination

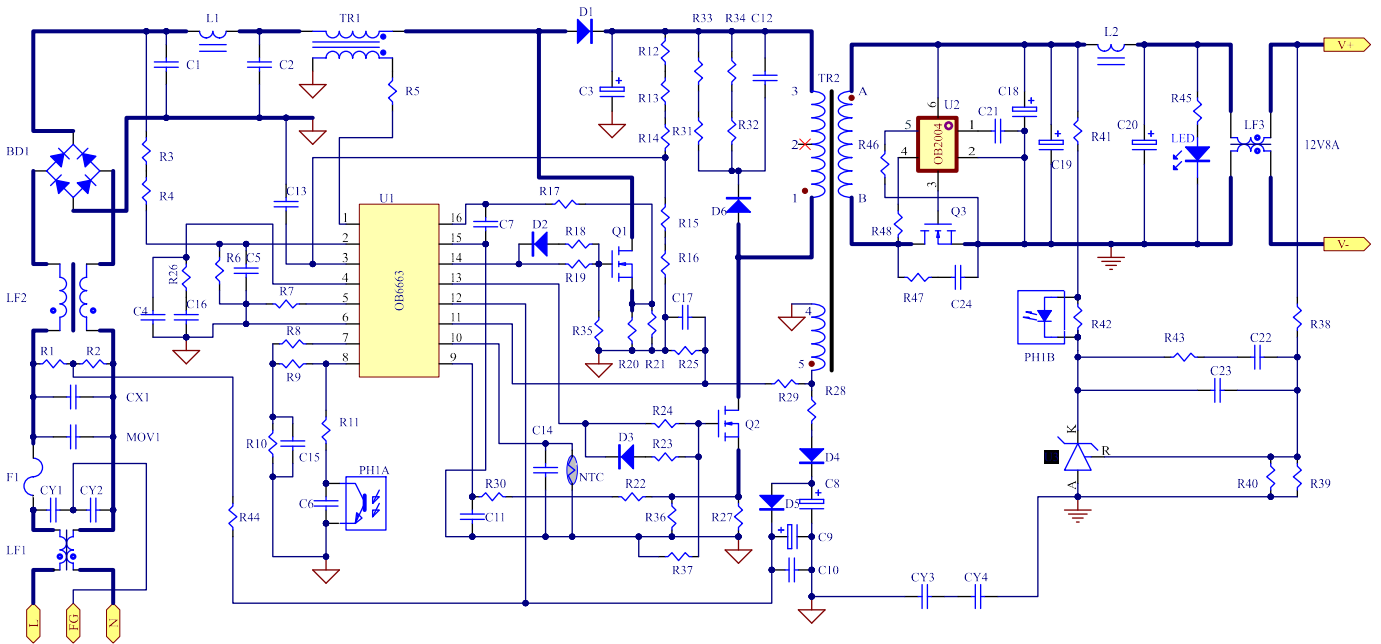
批准 Approval:	ZL	审核 Check:	ZL	制表 Execution:	BMD
-----------------	----	-----------	----	---------------	-----

产品规格承认书 SPECIFICATION				文件编号 File No.	UME-EG-SP23081701/A1
品名 Product	开关电源 SPS	型号 Model	AD-AKA120P700	日期 Date	2023-08-17

3.6 测试线路图 Test Circuit



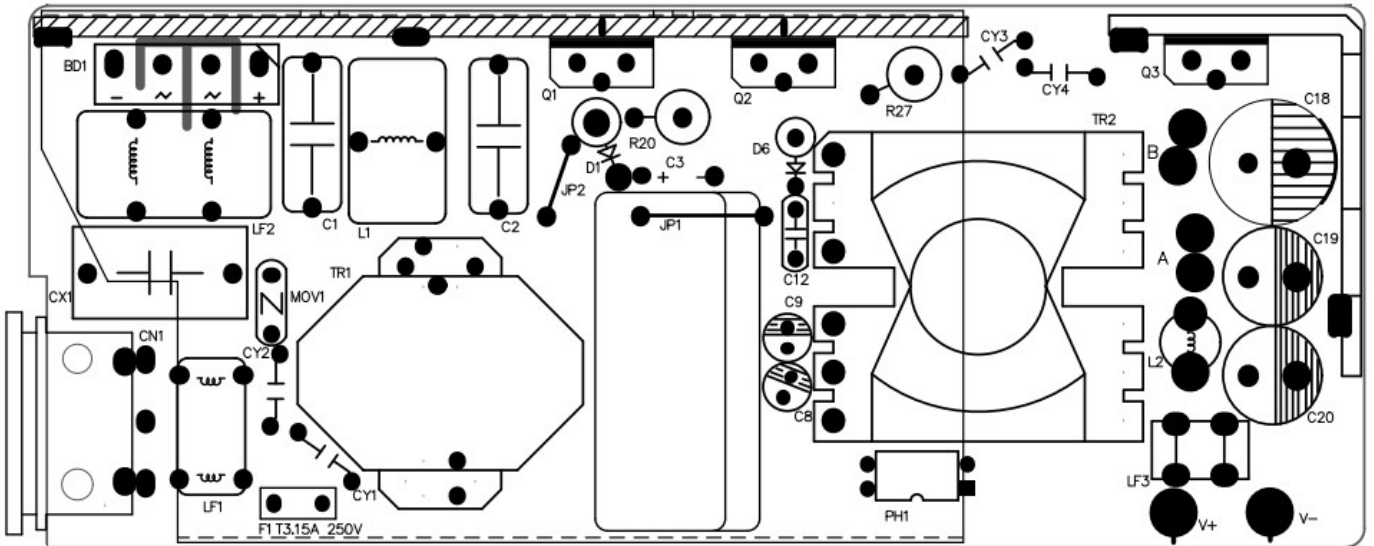
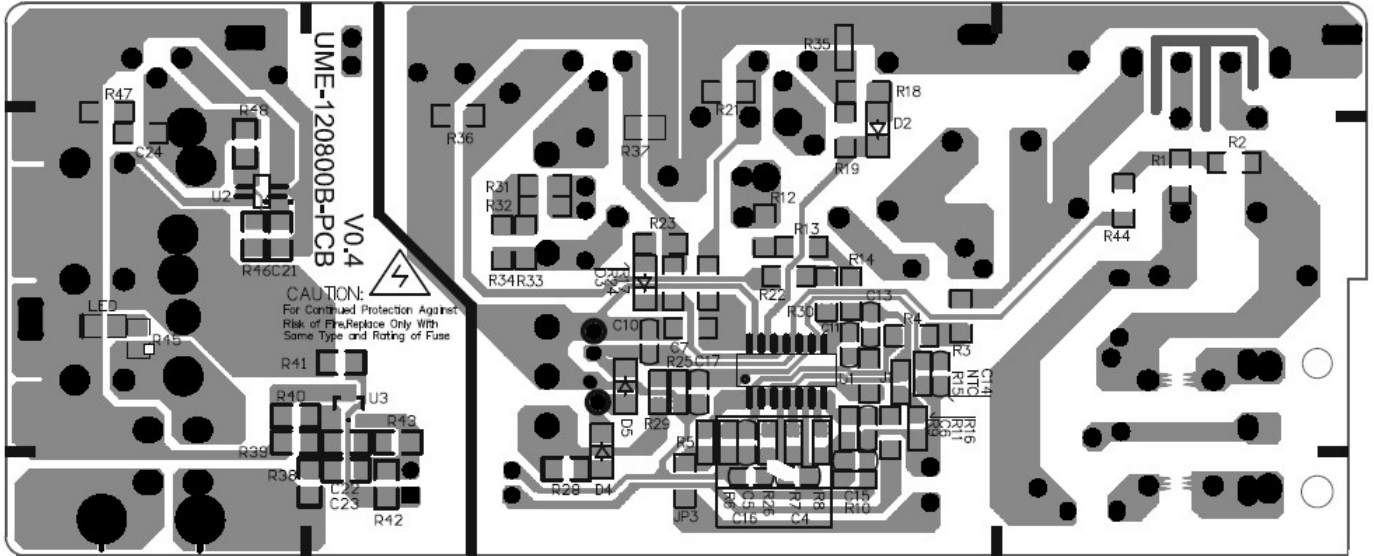
4 线路图 Schematic Diagram



批准 Approval:	ZL	审核 Check:	ZL	制表 Execution:	BMD
-----------------	----	-----------	----	---------------	-----

产品规格承认书 SPECIFICATION				文件编号 File No.	UME-EG-SP23081701/A1
品名 Product	开关电源 SPS	型号 Model	AD-AKA120P700	日期 Date	2023-08-17

5 电路板图 P.C.B



批准 Approval:	ZL	审核 Check:	ZL	制表 Execution:	BMD
-----------------	----	-----------	----	---------------	-----

产品规格承认书 SPECIFICATION				文件编号 File No.	UME-EG-SP23081701/A1
品名 Product	开关电源 SPS	型号 Model	AD-AKA120P700	日期 Date	2023-08-17

6 CORD 图 (单位 unit: mm 颜色 color: Black)

					标记	数量	更改单号	更改内容	签名	日期

备注:
 1. 导线规格: 16AWG 2464 音叉型 黑色, 芯线颜色: 红色+黑色, 导线总长 1000mm; 材质符合RoHS要求。导线按图示尺寸插扎、测试, 导线间应开路, 对应线头线尾应短路导通, 极性连接正确;
 2. 两头剥线焊锡, 剥线长度3mm+1/-0。剥线要求如图所示, 剥丝线焊锡的直径为2.1mm MAX。接线方式: 红色芯线接PIN中心, 黑色芯线接外侧, 外模PG-017成型, SR-017成型; SR017尺寸为8.8*7.8mm。
 3. SR拉力测试: 吊重1Kg/10分钟, 不可有位移, 吊重5Kg/1分钟, 位移2mmMAX
 4. 插拔力测试: 插入力2KgMAX, 拔出0.3KgMIN; 插拔6000MIN次不允许有电气和机械性能的损坏, 且满足拔出0.1KgMIN;
 5. 摇摆测试: 吊重500g, 以40次/分作90°往返, 每一往返为一次, 至少1000次;
 6. PLUG绝缘阻抗测试: 100MΩ MIN在500DC/分; PLUG接触阻抗测试: 100mΩ MAX;
 7. 导线, SR, PLUG非移行性依据厂内一般进行; 禁止使用VDE所禁用的物质。
 8. 打*号尺寸, 为入料检查项目;

接线方式

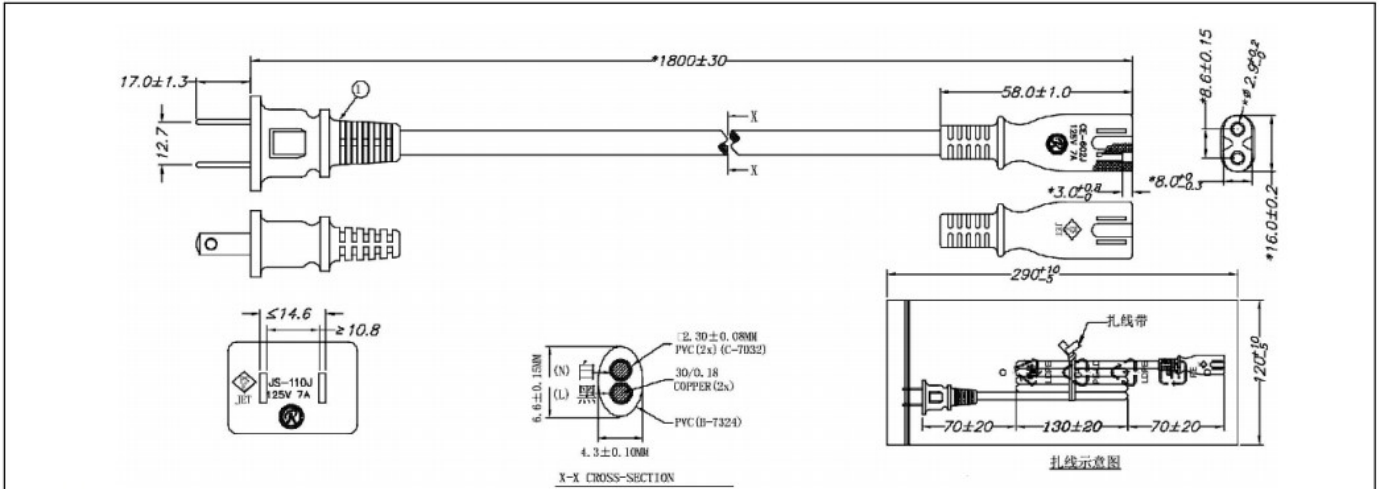
DC头中心针 —— 红色芯线
DC外壳 —— 黑色芯线

塑胶材料	供应商	品番	型号	硬度(邵氏)	成型温度	UL号	⑥													
内模	无						④			低毒PVC	0.4g		PLUG 黑色PVC 60P							
线材PP(内)	集宏鑫			35P	165~170度		⑤			扎带	1pcs		黑色无铁芯L=110mm							
线PVC(外)	集宏鑫			80P	155~160度		②			低毒PVC	4g		SR 黑色PVC 60P							
PG注塑PVC	集宏鑫			60P	165~170度		①			线材	1.03m		UL2464 16AWG BK环保							
SR注塑PVC	集宏鑫			60P	165~170度		①			DC头	1pcs		5.5*2.1*23.5mm 公音叉 环保							
							序号	图号	名称	数量			备注							
							尺寸	公差	名称	数量			输出线	图号: CORD-120800A						
							拟制	审核	白美端				编号: LJDY2R1102005							
							批准						单位	比例	版次	张数				
													mm	:	A/O	1/1				
													XIAMEN UME ELECTRONICS CO., LTD.							

批准 Approval:	ZL	审核 Check:	ZL	制表 Execution:	BMD
-----------------	----	-----------	----	---------------	-----

产品规格承认书 SPECIFICATION				文件编号 File No.	UME-EG-SP23081701/A1
品名 Product	开关电源 SPS	型号 Model	AD-AKA120P700	日期 Date	2023-08-17

7 AC CORD 图



备注:

- 1、线材规格: VCTFK 0.75/2C BLK L:1800mm
- 2、导线按图示尺寸捆扎、测试。导线间应开路, 对应线头线尾应短路导通。
- 3、摇摆测试: 吊重500g, 以40次/分作60°往返, 每一往返为一次, 至少2000次。
- 4、插头、线及接口符合PSE(日本)标准。
- 5、材质符合“RoHS”要求。
- 6、测试参数: 内高压3KV, 时间1S, 外高压4KV, 时间为2S, 绝缘 5MΩmin, 时间1S 漏电流0.5mA。
- 7、头部: JS-110J 尾部: CE-602J
- 8、插拔力: 10N-50N
- 9、印字内容: R31945 RoHS <PS>E JET VCTFK 2*0.75mm² (30/0.18mm) 300V FUND RESOURCES ELECTRIC INDUSTRY CO., LTD SHANGHANG YEAR

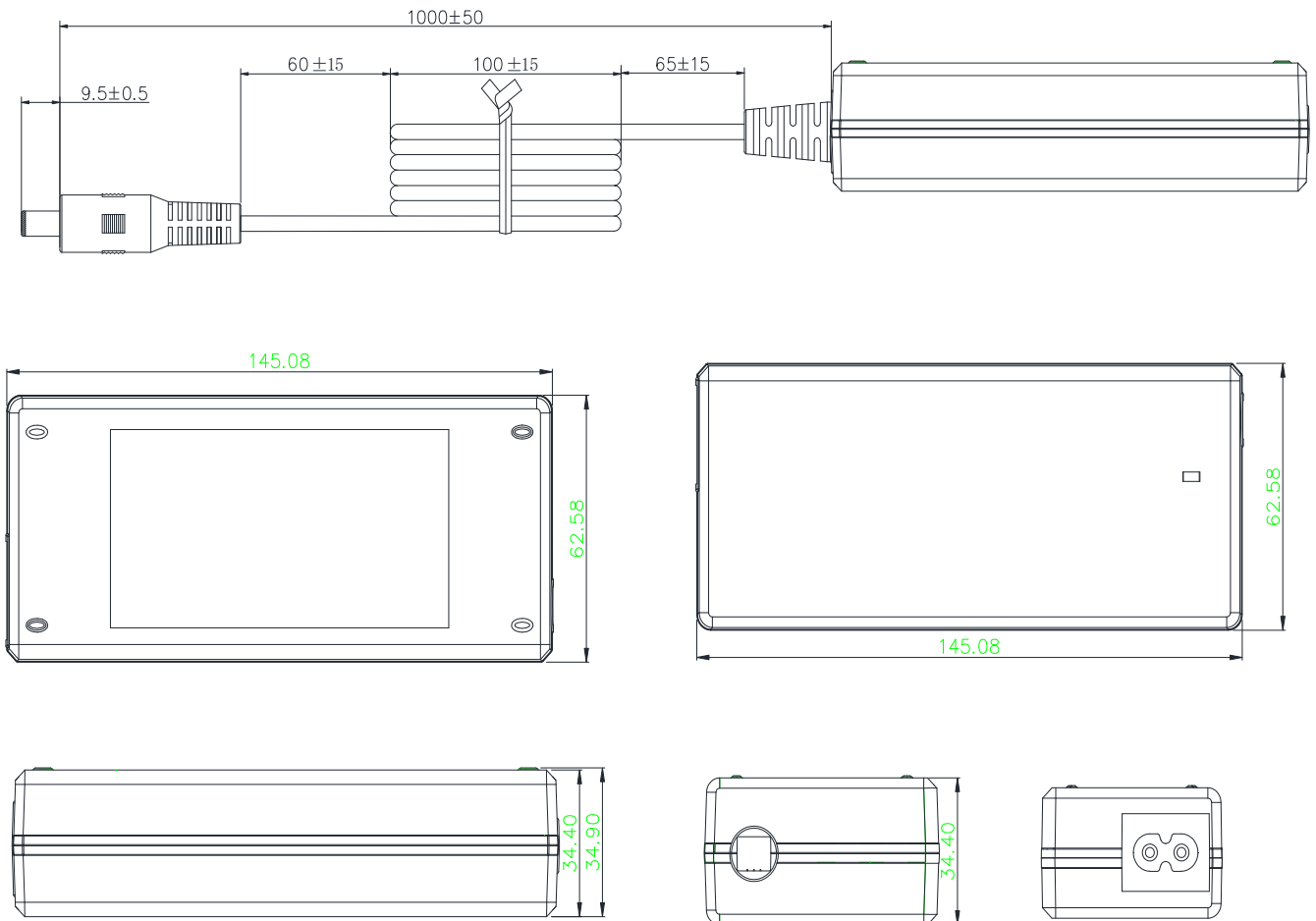
厦 门 友 盟 电 子 有 限 公 司

版次	变更内容	制图	审核	批准	单位	mm	图 称	输入电源线	
		白美端			比例	2021-9-25	图 号	CORD-120500M	版本
			日期	编号	LJDY0120017		1.0		
				产品型号	SW-120500T9				

批准 Approval:	ZL	审核 Check:	ZL	制表 Execution:	BMD
-----------------	----	-----------	----	---------------	-----

产品规格承认书 SPECIFICATION				文件编号 File No.	UME-EG-SP23081701/A1
品名 Product	开关电源 SPS	型号 Model	AD-AKA120P700	日期 Date	2023-08-17

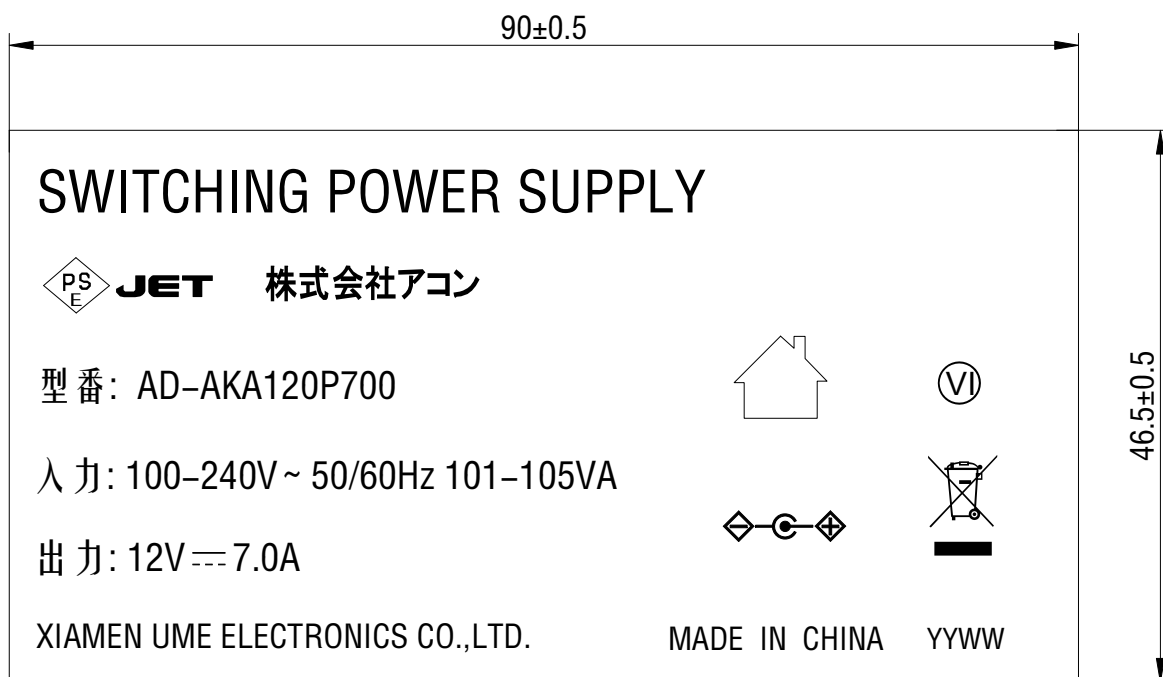
8 外观示意图 Cord and Mechanical Drawing (单位 unit: mm 颜色 color: Black)



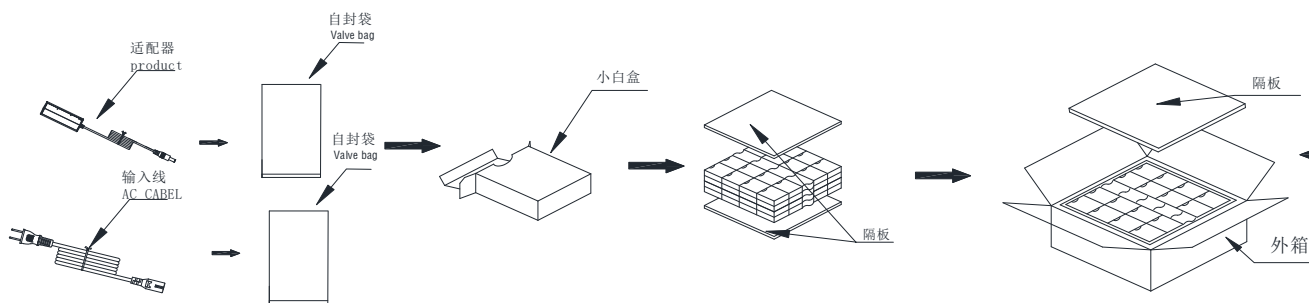
批准 Approval:	ZL	审核 Check:	ZL	制表 Execution:	BMD
-----------------	----	-----------	----	---------------	-----

产品规格承认书 SPECIFICATION				文件编号 File No.	UME-EG-SP23081701/A1
品名 Product	开关电源 SPS	型号 Model	AD-AKA120P700	日期 Date	2023-08-17

9 铭板标识 nameplate



10 包装方式 Packaging



批准 Approval:	ZL	审核 Check:	ZL	制表 Execution:	BMD
-----------------	----	-----------	----	---------------	-----

产品规格承认书 SPECIFICATION				文件编号 File No.	UME-EG-SP23081701/A1
品名 Product	开关电源 SPS	型号 Model	AD-AKA120P700	日期 Date	2023-08-17

11 材料清单 BOM

NO	ITEM	DESCRIPTION	SPECIFICATION	QTY	MANUFACTURER
1	PCB	PCB	UME-120800B-PCB	1	TXS/JT/MW/HG
2	R1,R2	Chip R	1M Ω ±5% 1206	2	YAGEO/FENG HUA
3	R3,R4,R12,R13,R14	Chip R	3.0M Ω ±5% 1206	5	YAGEO/FENG HUA
4	R5,R25	Chip R	30K Ω ±5% 0805	2	YAGEO/FENG HUA
5	R6	Chip R	68K Ω ±5% 0805	1	YAGEO/FENG HUA
6	R7	Chip R	20K Ω ±5% 0805	1	YAGEO/FENG HUA
7	R11	Dip R	15 Ω ±5% 1206	1	YAGEO/FENG HUA
8	R15	Chip R	39K Ω ±1% 0805	1	YAGEO/FENG HUA
9	R16,R38	Chip R	20K Ω ±1% 0805	2	YAGEO/FENG HUA
10	R17,R22	Chip R	510 Ω ±5% 0805	2	YAGEO/FENG HUA
11	R18,R23,R48	Chip R	10 Ω ±5% 1206	3	YAGEO/FENG HUA
12	R19,R24	Chip R	30 Ω ±5% 1206	2	YAGEO/FENG HUA
13	R26	Chip R	12K Ω ±5% 0805	1	YAGEO/FENG HUA
14	R28	Chip R	2 Ω ±1% 1206	1	YAGEO/FENG HUA
15	R29	Chip R	150K Ω ±5% 0805	1	YAGEO/FENG HUA
16	R31,R32,R33,R34	Chip R	100K Ω ±5% 1206	4	YAGEO/FENG HUA
17	R35,R37,R45	Chip R	10K Ω ±5% 1206	3	YAGEO/FENG HUA
18	R36	Chip R	1.0 Ω ±5% 1206	1	YAGEO/FENG HUA
19	R39	Chip R	10K Ω ±1% 0805	1	YAGEO/FENG HUA
20	R40	Chip R	10.5K Ω ±1% 0805	1	YAGEO/FENG HUA
21	R41,R43	Chip R	1K Ω ±5% 0805	2	YAGEO/FENG HUA
22	R42	Chip R	5.1K Ω ±5% 0805	1	YAGEO/FENG HUA
23	R44	Chip R	300K Ω ±5% 1206	1	YAGEO/FENG HUA
24	R46	Chip R	30K Ω ±5% 1206	1	YAGEO/FENG HUA
25	R47	Chip R	22 Ω ±5% 1206	1	YAGEO/FENG HUA
26	JP3	Chip R	0 Ω ±5% 1206	1	YAGEO/FENG HUA

批准 Approval:	ZL	审核 Check:	ZL	制表 Execution:	BMD
-----------------	----	-----------	----	---------------	-----

产品规格承认书 SPECIFICATION				文件编号 File No.	UME-EG-SP23081701/A1
品名 Product	开关电源 SPS	型号 Model	AD-AKA120P700	日期 Date	2023-08-17

27	C4	Chip C	68nF±10% 50V 0805	1	YAGEO/FENG HUA
28	C5,C23	Chip C	472 50V±10% 0805 X7R	2	YAGEO/FENG HUA
29	C6	Chip C	473 50V±10% 0805 X7R	1	YAGEO/FENG HUA
30	C7	Chip C	471 50V±10% 1206 X7R	1	YAGEO/FENG HUA
31	C24	Chip C	471 500V±10% 1206 X7R	1	YAGEO/FENG HUA
32	C10	Chip C	104 50V±10% 0805 X7R	1	YAGEO/FENG HUA
33	C11,C13	Chip C	471 50V±10% 0805 X7R	2	YAGEO/FENG HUA
34	C16	Chip C	684 50V±10% 0805 X7R	1	YAGEO/FENG HUA
29	C17	Chip C	10PF 50V 0805 COG	1	YAGEO/FENG HUA
30	C21	Chip C	105 16V±10% 0805 X7R	1	YAGEO/FENG HUA
31	C22	Chip C	224 50V±10% 0805 X7R	1	YAGEO/FENG HUA
32	D2,D3,D5	Diode	1N4148W 75V 0.15A SOD-123	3	JF/MIC/PANJIT
33	D4	Diode	F7 1A/1000V/SOD-123FL	1	JF/MIC/PANJIT
35	LED	LED	0805 LED Green	1	Hong Qi
36	U1	IC	OB6663L SOP16	1	On Bright
37	U2	IC	OB2004 SOP-23	1	On Bright
38	U3	IC	CJ431±0.5% SOT-23	1	Changdian/UTC
39	D1	Diode	MUR460 4A 600V DO-201AD	1	JF/MIC/PANJIT
40	D1	D	Φ1.15* 3.50*3mm	1	HXH
41	D6	Diode	RL207 2A 1000V DO-15	1	JF/MIC/PANJIT
42	C1	M Cap	474J400V P=15mm CBB21	1	STE
43	C2	M Cap	105J400V P=15mm CBB21	1	STE
44	C3	E Cap	100uF 450V±20% 105℃ 18*35mm(BXW)	1	RUBYCON
45		E Cap	100uF 450V±20% 105℃ 18*35mm(TXW)		RUBYCON
46		E Cap	100uF 450V±20% 105℃ 18*35mm(UCY)		NICHICON
47	C8	E Cap	22uF 50V±20% 105℃ Φ5*11mm(YXF)	1	RUBYCON
		E Cap	22uF 50V±20% 105℃ Φ5*11mm(YXG)		RUBYCON

批准 Approval:	ZL	审核 Check:	ZL	制表 Execution:	BMD
-----------------	----	-----------	----	---------------	-----

产品规格承认书 SPECIFICATION				文件编号 File No.	UME-EG-SP23081701/A1
品名 Product	开关电源 SPS	型号 Model	AD-AKA120P700	日期 Date	2023-08-17

48	C9	E Cap	4.7uF 50V±20% 105℃ Φ5*11mm(YXF)	1	RUBYCON
49	C12	M Cap	332 1KV±5% P=5mm	1	HAOZILIANG
50	C18,C19,C20	E Cap	1500uF 16V±20% 105℃ 10*20mm(ZLH)	3	RUBYCON
51	R20	R	0.30Ω 2W±1%	1	CS/HXH/ ZY
52	R27	R	0.27Ω 2W±1%	1	CS/HXH/ ZY
53	RT1	R	07D471±10%	1	STE
54	LF1	Inductance	2.0mH±20% Φ 0.6mm (T18*10*7)	1	HXH/ZY
55	LF2	Inductance	17mH±10% Φ 0.5mm , 16.3mH±10% Φ 0.5mm (T20*12*10)	1	HXH/ZY
56	LF3	Inductance	280uH±20% Φ 1.2mm (T13*7.5*5)	1	HXH/ZY
57	L1	Inductance	580uH MIN. Φ0.6 T18*10*6.5	1	HXH/ZY
58	L2	Inductance	1.2uH MIN.D4*18 Φ1.2	1	HXH/ZY
59	CY1,CY2	Y cap	Y2 102 250V±20% P=7.5mm	2	STE/HJ
60	CY3,CY4	Y cap	Y2 472 250V±20% P=7.5mm	2	STE/HJ
61	CX1	X Cap	*0.33uF 250V±20% P=15mm	1	STE
62	TR1	TRANSFMOR	TR-120800A	1	HXH/UME/JQ
63	TR2	TRANSFMOR	TR-120800B	1	HXH/UME/JQ
64	FI	FUSE	*T3.15A/250V	1	XC/SUNNY/Little fuse
65	R20,R27	Tube	Φ5mm 125℃(UL)	18*2	Sanlian/WORE
66	BD1	Rectifier Bridge	KBL406G 600V 4A P=5mm	1	PANJIT/JF
67	Q1	MOSFEET	HF20N65 650V 20A TO-220F	1	JF/HF
68		MOSFEET	TK20A60W 600V 20A TO-220F		Toshiba
69	Q2	MOSFEET	SJ13N65F 650V 13A ITO-220	1	JF/HF
70		MOSFEET	TK12A65D 650V 12A TO-220F		Toshiba/HF/JF
71	Q3	MOSFEET	KS8202CB 150A 80V TO-220 Rds 4.6mΩ	1	GUANYU
72	Q1,Q2,Q3	Screw	Φ3*8	3	Yunzhan/jixin

批准 Approval:	ZL	审核 Check:	ZL	制表 Execution:	BMD
-----------------	----	-----------	----	---------------	-----

产品规格承认书 SPECIFICATION				文件编号 File No.	UME-EG-SP23081701/A1
品名 Product	开关电源 SPS	型号 Model	AD-AKA120P700	日期 Date	2023-08-17

73	Q1,Q2,Q3	Nut	Φ3mm	3	Yunzhan/jixin
74	Q3	Insulation sheet	BUSHING TO-220	1	GHT
75	Q3	Silicon Sheet	13*19*0.25mm	1	GHT
76	HS1	Heat Sink	SINK-120800T-1 (95*22*2.0)	1	XZ
77	HS2	Heat Sink	SINK-120800T-2 (24*22+43*22)*2.0	1	XZ
78	HS3	Heat Sink	SINK-120800T-3 (50*75*0.5)	1	XZ
79	PH1	Photo	EL-817MB DIP-4 P=10.2	1	Everlight
80			BPC-817MB DIP-4 P=10.2		Bright Led
81	JP1	Jump line	Φ0.6mm	22	UME
82	JP2	Jump line	Φ0.25mm	17	UME
83	TR2	Silicon Sheet	15*25*3mm	1	GK
84	CN1	AC INLET	ST-A03-005KT10(N)2.0	1	Chenli/BEJ
85		Case	UMED04-A (94V-0)	1	JLF/YGE
86		Case	UMED04-B (94V-0)	1	JLF/YGE
87		Light Pipe	4.52*2.01*2.5+Φ6*Φ4.52 d=9.04mm	1	JinTonZhou
88		DC cord	Φ2.1*5.5*9.5mm L:1000mm SR017 16AWG 2464 BK	1	DPK/GC/JHX
89		AC Cable	<PS>E 2*0.75 mm ² VCTFK L=1800mm Black, Lead-free soldering	1	Kailiangao
90		Valve bag	140*210*0.05mm	1	Xincheng
91		Valve bag	95*155*0.05mm	1	Xincheng
92		CARTON	350*345*280mm	0.031	XinRuicheng/ FuXing
93		LINER	345*340*3mm	0.031	XinRuicheng/ FuXing
94		BOOK	170*65*65mm	1	XinRuicheng/ FuXing
95		White glue	AP-688	3.5	JX
96		Solder Bar	Pb free	12.5	YUNNANXIYE
97		Solder wire	Pb free	1.2	YUNNANXIYE

批准 Approval:	ZL	审核 Check:	ZL	制表 Execution:	BMD
-----------------	----	-----------	----	---------------	-----